

About Grid United



Our team is developing long-distance, utility-scale electric transmission projects that will unite the U.S. electric grid, ensuring Americans have access to low-cost power—whenever and wherever it's needed.

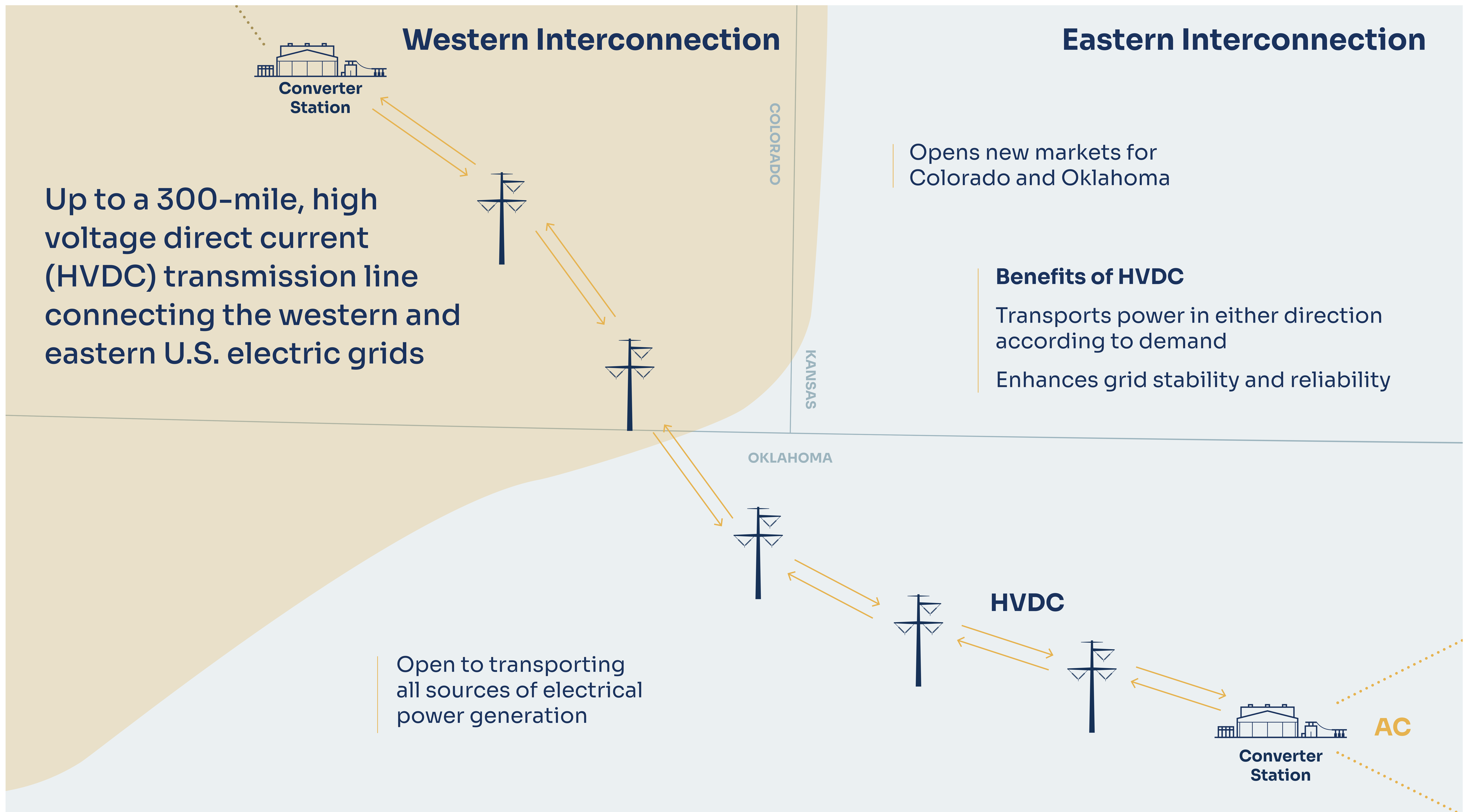
We are experienced energy industry professionals who have managed, built, and financed large-scale infrastructure projects across North America

Grid United, an independent transmission company, is backed by Centaurus Capital, the investment vehicle of John Arnold. Centaurus Capital has invested billions of dollars in energy projects across the U.S.



**THREE CORNERS
CONNECTOR**
A Grid United Project

About Three Corners Connector



Three Corners Connector Benefits

Three Corners Connector will strengthen the eastern and western U.S. electric grids through increased interconnection, providing regional customers access to more reliable, low-cost energy while meeting the growing demand for electricity.

SYSTEM RELIABILITY

The Project will help support a strong, reliable transmission system that:

- Alleviates transmission congestion and increases grid resiliency.
- Mitigates the impact of extreme weather events.
- Transports power in either direction according to demand.

TRANSMISSION CONSTRAINTS

Our electric system is currently constrained and system improvements are vital to increasing regional power reliability. The proposed transmission line and converter stations will:

- Provide access to new markets for power producers.
- Allow the export of power during periods of low demand.
- Transport all sources of electrical power generation.

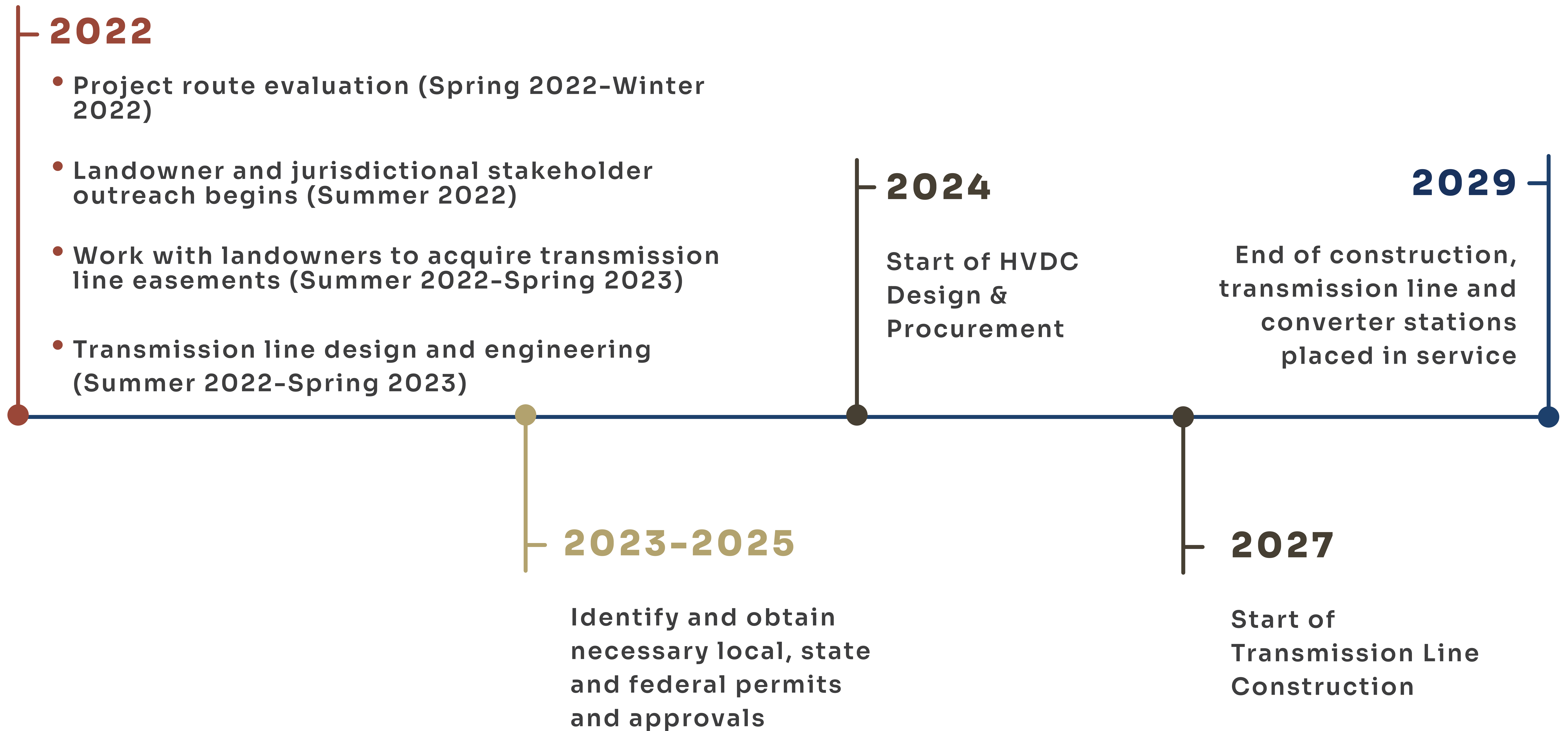
ECONOMIC BENEFITS

The Project represents an approximately \$1.5 billion investment in Colorado and Oklahoma and will enhance economic development by:

- Generating property tax revenue payments and landowner payments.
- Creating temporary construction jobs and permanent maintenance jobs.
- Increasing economic activity among local materials suppliers, professional services and hospitality.



Project Timeline



Landowner Engagement: What Can I expect?

2023	2024	2025	2026	2027	2028	2029
Community Outreach and Landowner Engagement						
Easement Acquisition		Potential Option Extension and Exercise				
				Structure and Prepaid Damage Payments		
				Construction		

A professional land agent will work with you throughout the entire process

Your agent will reach out to you to learn about the unique characteristics of your property

Your land agent will contact you regarding survey permission, the Option for Easement and a compensation program tailored to your property

Siting and Routing

Preliminary corridors have been identified for the proposed transmission line, and the preferred route will be determined through a comprehensive siting and routing process anticipated to be complete by the end of 2022.

Routing Considerations

Social

Residences; businesses; farming and ranching operations; places of worship; existing and planned land use; parks and recreational areas; cultural, historic and tribal resources; schools; airports/ airstrips; landowner and community feedback

Economic

Construction cost; constructability; mitigation costs; existing infrastructure; engineering constraints; land costs

Environmental

Wetlands, floodplains and other waters regulated by state/federal agencies; sensitive, threatened and endangered species; wildlife habitat

Our Approach

AVOIDANCE ► **MINIMIZATION** ► **MITIGATION**



**THREE CORNERS
CONNECTOR**
A Grid United Project

Siting and Routing

Land Rights	Transmission Engineering	System Planning	Economics	Environmental Resources	Cultural Resources	Land Use
<p>Land Ownership & Boundaries</p> <p>Conservation Easements</p> <p>Formally Designated Lands</p> <ul style="list-style-type: none"> • Parks • Trust Land • Wilderness areas • Inventoried Roadless Areas • Research Natural Areas • National Landmarks • National Monuments • National Recreation Areas • National Historic Sites • Military Reservation/Base • Bureau of Land Management (BLM) • U.S. Forest Service • U.S. Fish & Wildlife Service • Department of Defense • Bureau of Reclamation • Bureau of Indian Affairs • National Park Service Areas of Critical Environmental Concern National Wildlife Refuges • National Conservation Areas • National Land Trust 	<p>Technical Criteria</p> <p>Right-of-Way</p> <p>Length</p> <p>Angles</p> <p>Construction and Maintenance Access</p> <p>Road, Rail, Waterway Crossings</p> <p>Topography</p>	<p>Interconnect Locations</p> <p>Set Endpoints</p> <p>Converter Stations</p> <p>Define Limits on Location, Length</p>	<p>Length</p> <p>Constructability</p> <p>Impacts to Other Factors</p> <p>Permitting</p> <p>Schedule</p> <p>Public Acceptability</p>	<p>Avian Species Habitat</p> <p>Big Game Crucial Habitat</p> <p>Lesser Prairie-chicken</p> <p>Water Resources</p> <p>Topography</p> <p>Wild & Scenic Rivers</p> <p>Important Bird Areas</p> <p>Conservation Easements</p>	<p>National Register of Historic Places</p> <p>Historic Trails (Santa Fe Trail)</p> <p>Scenic Byways</p> <p>Known Cultural Resources</p>	<p>Land Use/Land Cover</p> <p>Homes & Other Buildings</p> <p>Public Institutions</p> <p>Air and Ground Transportation</p> <p>Oil & Gas Facilities</p> <p>Extractive Industries</p> <p>Agricultural Operations – Irrigation, Confined Animal Operations</p> <p>Electric Facilities – Transmission, Substation, Generation (Wind, Solar)</p> <p>Communications Facilities</p>



Permitting

We will coordinate with local, state, and federal permitting authorities to determine all permits required over the course of the project, as well as federal and state wildlife agencies to avoid or minimize impacts on special-status species.

ANTICIPATED LOCAL LAND USE PERMITS

- Pueblo County 1041 Permit
- Otero County 1041 Permit
- Bent County Special Review Use Permit
- Texas County Utility Permit

OTHER AGENCY COORDINATION FOR APPROVALS, IF NECESSARY

- Oklahoma Department of Environmental Quality Demolition Notification and Construction Stormwater Permit
- Colorado Department of Public Health and Environment Demolition Notification, Air Pollution Emissions Notice for Land Development, Construction Stormwater Permit and Dewatering Permit
- Colorado Department of Transportation Utility Permit
- US Army Corps of Engineers Electric Utility Line and Telecommunications Activities, Nationwide Permit 57
- Federal Aviation Administration 7460-1 Filing
- US Fish and Wildlife Service Lesser Prairie Chicken Mitigation Incidental Take Permit
- Oklahoma Department of Transportation Utility Permit



Construction and Restoration

We are committed to minimizing the impacts of construction on agriculture lands.

A complete restoration plan will be developed with landowners and agencies, including:

- Designated access roads and construction travel lanes within the right-of-way
- Reestablishment of crop root zones
- Restoring all field drainage to preconstruction conditions
- Consideration of impacts to irrigation systems during routing

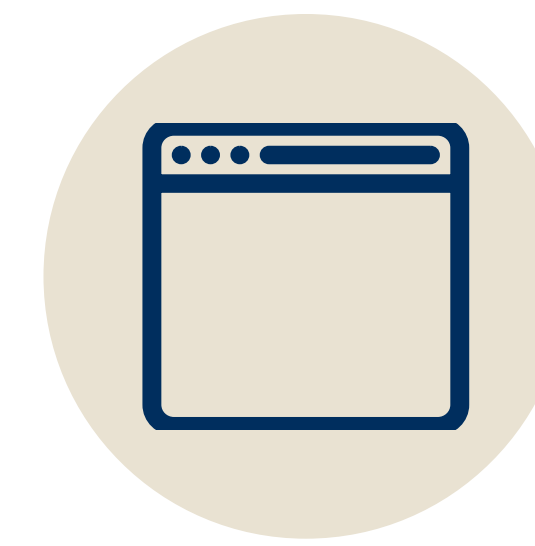
After construction is complete, agricultural activities can continue in the transmission line right-of-way.





THREE CORNERS CONNECTOR

A **Grid United** Project



www.threecornersconnector.com



info@threecornersconnector.com



(877) 623-4651